



# THE BRITISH SCHOOL

of Costa Daurada

*"Education is the Key to unlocking the  
world. A passport to freedom"*

Oprah Winfrey

# THE SCHOOL



In this e-book you will find a small introduction to the most relevant information of our school. All the information is fully explained on our website.

We hope to meet you soon and to have the opportunity to walk alongside during the next coming years.

## The School

Jigsaw was founded in 2008 with great enthusiasm. The project quickly achieved success and significant social impact, focusing on transformative learning that promotes initiative, creativity, and autonomy.

In 2020, the global pandemic presented unique obstacles which led us to a deeper analysis of future challenges. By 2023, substantial improvements were made, leading to a strategic project aimed at addressing the needs of our educational community.

As the academic year 2025/2026 approaches, the focus is on keeping implementing these improvements to become a benchmark in education around the country.

On behalf of all of us here at BSCD, we look forward to welcoming new families and continuing to grow together.

## Our Vision and Mission

The British School of Costa Daurada is a non-denominational private school aiming to provide high-quality English-language education. The school is committed to implementing an innovative educational project within the framework of the British educational system's pedagogical excellence.

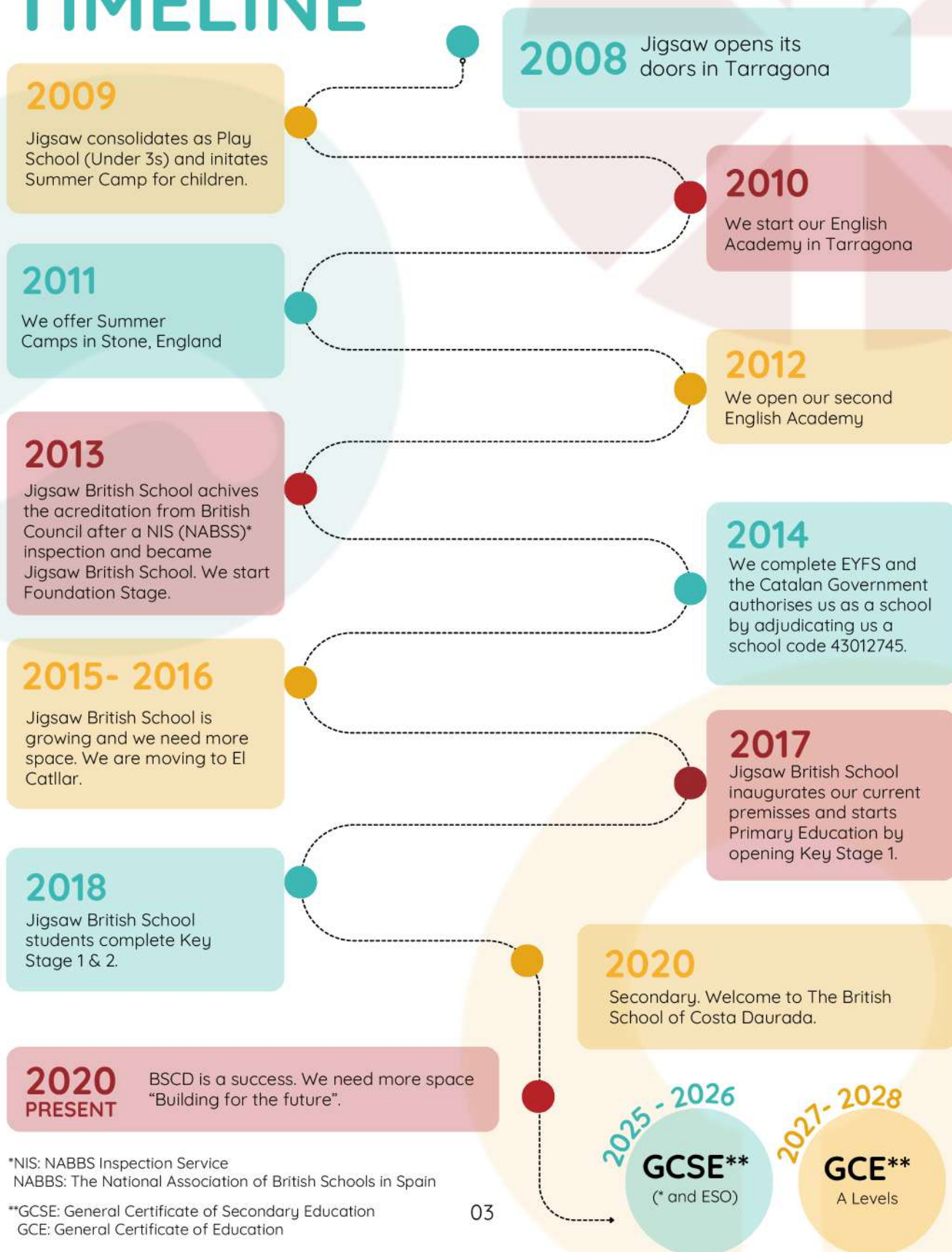
BSCD offers education from Babies through graduation in a modern and global educational system adapted to current realities. It prioritizes the happiness and well-being of students, their families and the team, while ensuring strong academic outcomes.

The school promotes holistic development, respect for ethical and moral values, cultural inclusivity, and acceptance of others to ensure excellence in all aspects of the institution, offering exceptional educational and personal perspectives.





# TIMELINE



\*NIS: NABBS Inspection Service  
NABBS: The National Association of British Schools in Spain

\*\*GCSE: General Certificate of Secondary Education  
GCE: General Certificate of Education





## Location

The British School of Costa Daurada is situated in El Catllar, near to the historic city of Tarragona, a UNESCO World Heritage Site.

El Catllar offers a natural environment with nearby amenities such as medical facilities, supermarkets, pharmacies, a golf club, and sports facilities.

Offering regular public transport, the city is well-connected with the Camp de Tarragona high-speed railway station which connects directly with the main cities in Spain and neighboring countries and is very near Reus Airport. Barcelona, both the city and its International airport, are just an hour away.

## School Facilities

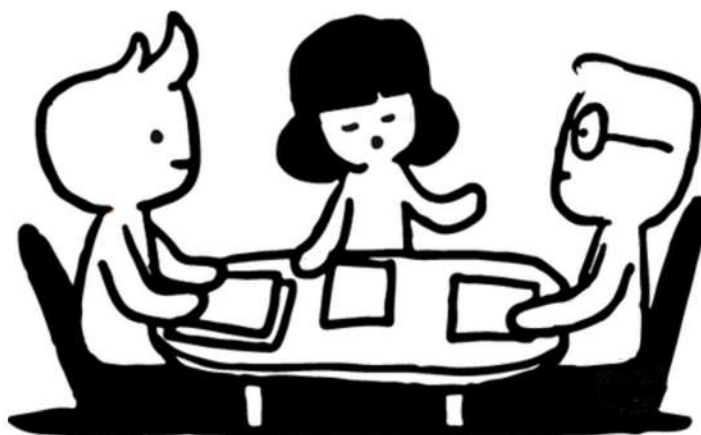
Our school consists of three buildings with large, bright and comfortable classrooms with outdoor space.

Each classroom is equipped with interactive whiteboards and are richly resourced and designed to promote active learning and lifelong experiences.

The outdoor facilities are used for playing, outdoor learning and PE sessions.

We have a STEAM room equipped with the latest technologies and also a Library that enhances children to investigate children deeper on the topic they are learning in class.

Our campus is located in a building with an “A” class energy certification.



# EDUCATIONAL APPROACH



The BSCD believes in creating a supportive environment to guide students towards self awareness in all key aspects of their development, with teachers and staff dedicated to building confidence from early ages through graduation. We are committed to delivering high-quality education that helps students achieve their full potential, aiming to provide a broad and balanced curriculum, ensuring that students leave with both strong academic foundations and essential life skills.

We focus on several key areas to enhance the educational experience for its students:

- Nurturing a Love for Learning
- Developing Skills and Knowledge
- Effective Feedback and Assessment
- Values-Based Education
- Nurturing Well-Rounded Individuals
- Social and Emotional Development

At our school, we envision a vibrant community where values are at the heart of everything we do. Guided by the principles of respect, responsibility, creativity, fairness, kindness and the pursuit of personal best, we cultivate an environment where every individual thrives.

With a 'can-do' attitude, we embrace challenges as opportunities for growth. We celebrate our successes, big and small, promoting a culture of achievement and recognition. We aim sky high; setting ambitious goals and empowering each other to reach for the stars.

In our journey of learning, we understand that mistakes are stepping stones to success.

We learn from our missteps, resilient in our pursuit of knowledge and improvement. When faced with challenges, we seek solutions collaboratively, harnessing the power of teamwork and innovation.

Respect is the foundation of our community, flowing freely in all directions. We open doors, minds and hearts, embracing diversity and promoting inclusivity. With open minds and compassionate hearts, we create a safe and supportive environment where everyone feels valued and empowered to shine.

Together, we strive to create a brighter future, one where every member of our school community is inspired to reach their fullest potential and make a positive difference in the world.

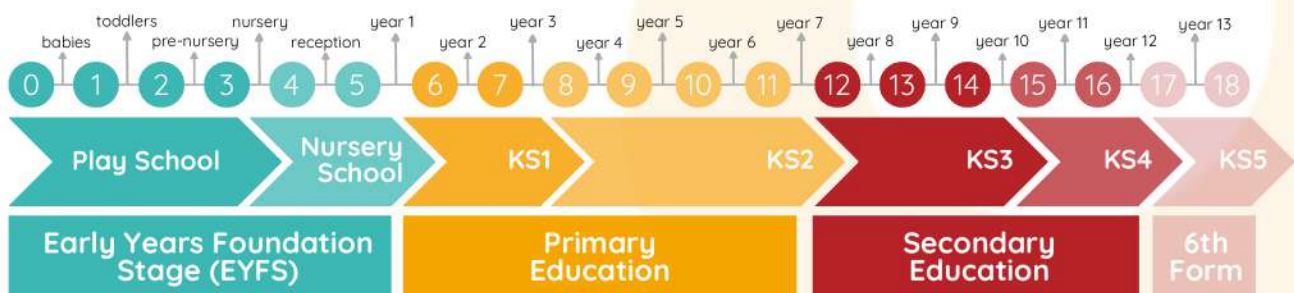




## THE BRITISH CURRICULUM

We focus on creating a learning environment that fosters fairness, responsibility, kindness, self-confidence, resilience, creativity, and personal excellence. We believe that the school must provide a safe, caring, and child-centered environment that encourages students to become confident, independent learners.

BSCD is committed to following the National Curriculum programmes of study up to Year 11. The English National Curriculum occupies approximately 80% of the 35-period school week and is delivered in English. The remaining 20% is dedicated to studying German, Catalan, and Spanish languages, as well as Catalan Humanities (in Secondary), taught in their respective languages.





## DIGITAL CITIZENSHIP EDUCATION

At the British School of Costa Daurada, we recognise that children are growing up in a fast-paced digital world where technology plays a central role in their daily lives. Our aim is to guide students to use technology safely, smartly, and kindly through a strong focus on Digital Citizenship. Using the award-winning Common Sense Education Curriculum, all primary pupils participate in six interactive, age-appropriate lessons each year, reinforced by themed assemblies and peer-led initiatives that promote responsibility and respect online.

Events like Digital Superheroes STEAM Day and collaboration with families through resources, Tapestry activities, and our DCE Families Unite Committee help create a united approach.

As we work towards becoming a Common Sense Recognised School, we are committed to nurturing a generation of digital citizens who are smart, safe, and kind.



## DEPARTMENTS ACROSS THE SCHOOL

### Languages Department

While we immerse our children from the beginning in the English language, we strive to provide a multicultural and multilingual education to young learners from 4 months. We have been doing so since 2008 and we are starting to see very progressive and positive results. Our way focuses on the continuous strengthening and consolidation of children's linguistic and communicative skills.

In Primary and Secondary, students will continue to develop English as a vehicular language, Catalan and Spanish are introduced in Year 1 and it is compulsory for all pupils to attend these subjects up to Year 11.

German as a foreign language starts in Primary Year 5.

### Careers Department

From Year 9 onwards, students receive careers guidance. This supports them when choosing (i)GCSE Options during the month of April. All Year 10 students are offered a short work-shadowing experience with a range of companies and institutions.





## **Students Welfare and Support Department**

This department plays a crucial role in supporting students' learning, emotional wellbeing, and overall development. Its main aim is to identify and address individual learning needs, provide guidance on educational strategies, and support students with diverse abilities or challenges—whether academic, social, emotional, or behavioural.

The department works closely with teachers, families, and external specialists to create inclusive and supportive learning environments, offering assessments, interventions, counselling, and tailored learning plans to help every student reach their full potential.



- **Wellbeing**

The school actively works to create a nurturing and supportive environment that addresses the physical, mental, emotional, and social well-being of each individual. We place a high priority on promoting well-being within our school community. We are committed to creating and maintaining a safe and secure environment for children to be cared for.

We recognise that it is our responsibility to safeguard the welfare of all children by committing to a practice that protects them. This is achieved through early intervention programs that enable students to thrive both academically and personally. The department is committed to attending to the unique needs of each student, parent, and member of the school community, providing an inclusive and accessible environment. Education on respectful and inclusive behavior is provided through group discussions, interactive workshops, guest speakers, group projects, self-reflection, goal setting, counseling services, scenario-based assessments, and parent workshops.

- **Safeguarding**

The aim of the Safeguarding Department is to ensure the safety and protection of all students by creating a secure and supportive environment. The department works proactively to identify and respond to any concerns related to child protection, promotes a culture of trust and respect, and ensures that all staff are trained and vigilant in recognising signs of harm or abuse. By working in partnership with families and external agencies, the department upholds the highest standards of care to safeguard every child in the school community.





- **SEND - Special Educational Needs and Disabilities**

We have a unique and dedicated SEND Department at school lead by our school psychologist. Its aim is to offer support to the whole school community and it is designed to ensure that all students, regardless of their learning difficulties or disabilities, have equal access to education and the opportunity to reach their full potential. SEND support at school is a comprehensive approach that involves identification, assessment, individualized planning, inclusive education, resource provision, parental involvement, professional development, and transition planning.

- **Pastoral**

The aim of the Pastoral Department is to support the personal, social, and emotional development of each student, ensuring they feel valued, respected, and ready to learn. The department also plays a key role in promoting positive behaviour, helping students understand the school's expectations and the importance of making responsible choices. Through clear guidance, consistent boundaries, and constructive consequences, it encourages a respectful and inclusive environment where students can thrive both academically and personally.

## ENRICHMENT PROGRAMMES

### Outdoor Learning

Our Outdoor Learning Programme provides an all-round education that nurtures physical, social, emotional and cognitive growth allowing children to experiment in an open-ended environment that links with our curricular topics, tailored to their interests. Students gain a deeper connection with nature and are encouraged to be more environmentally conscious, resilient and develop a curiosity for learning.

### House of Values

The House of Values programme is a way of bringing pupils of different ages and skill sets together. giving our younger pupils the opportunity to learn and connect with our older pupils and our older pupils the opportunity to be leaders and role models to their younger counterparts.

The House of Values also helps to embed Our Core Values into the hearts and the minds of all of our pupils, encouraging them to do their best, not only for themselves, but for the good of their House family.

#### House of Values Shields





## **Green School**

Provides a platform for holistic learning, personal development and intends to foster commitment and a sense of responsibility for the planet by promoting sustainable values and practices, so our students will be environmentally aware and proactive citizens.

## **STEAM (Science, Technology, English, Arts and Maths)**

The STEAM Classroom is an innovative space designed to foster creative learning, technological exploration, and collaboration among students. The STEAM approach emphasises cross-disciplinary learning, creativity, problem-solving abilities, and critical thinking, providing students with hands-on experiences and real-world applications that bring learning to life and have access to engaging, relevant, and challenging STEAM education.

## **Drama**

Drama helps students learn new vocabulary in context, improving understanding and retention. Acting out stories enhances comprehension, critical thinking, and confidence, while also developing non-verbal communication skills. It promotes teamwork, empathy, and creativity, supporting literacy and cultural awareness. Drama makes lessons more engaging and fun, motivating students to participate actively. Additionally, it can be integrated with other subjects like history or science to reinforce learning across the curriculum.

## **The Music Hub**

The Music Hub will serve our pupils as a dynamic space where their curricular and extracurricular music lessons will take place. It is a space that nurtures creativity, musical skill development, emotional well-being and cultural appreciation; enriching student's lives and contributing to their holistic growth.

## **Library Hub**

At the British School of Costa Daurada, the Library Hub is a welcoming space that promotes a love of reading and supports learning across the curriculum. It offers a quiet area for study and a collaborative space for group work, encouraging teamwork and communication. Integrated with classroom learning, it provides resources that support academic growth, inviting all pupils to explore, learn, and enjoy reading.

## **Newspaper**

Our school newspaper, created by Year 6 pupils with contributions from the entire school community, aims to inform, engage, and connect us all. It features news, sports updates, House of Values events, opinion pieces, interviews, and creative writing that reflect daily life at BSCD. Guided by experienced journalists Sergi and Mar, pupils take the lead in shaping each edition. We invite you to download past issues and experience the spirit of our school!



# BEYOND THE CLASS



## SERVICES

### Bus

We offer the bus service to ensure that students can access the school and to provide a safe and efficient transportation of students to and from school.

The vehicles are adapted to accommodate students with specific needs and additional support is provided.

You can find the present bus routes and schedules for the designated stops on the website. The routes may vary depending on demand and they will be updated accordingly.

We highly encourage the use of the bus service and carpooling, which can reduce the environmental impact compared to individual car use.

### Meals

At BSCD, we strive to promote and ensure children's understanding about the importance of making healthy choices. We believe that learning about and through food is an important part of children's development and is integrated in our curriculum.

The goals for lunchtime at the school are to create a happy, social, and fully positive experience for both children and adults. The focus is on ensuring that children enjoy relaxed and sociable mealtimes while developing good table manners through positive role modeling and encouragement.

It is essential that all adults understand and promote these values to support children in making choices and developing their independence. Individual dietary requirements will be respected and catered to, with the support of a nutritionist for families and staff.

Additionally, the school aims to provide a positive and welcoming eating environment to encourage good eating habits and social skills.







## After-School Programmes

After-school programs play a crucial role in the overall development and well-being of students. Our After-school programs typically include a variety of extracurricular activities such as sports, arts, music, robotics and homework clubs. These activities allow students to explore their interests, develop new skills, and discover their talents, fostering a well-rounded education. After-school programs can help students develop important life skills such as time management, leadership, teamwork, and communication. These skills are not only beneficial for academic success but also for future career and personal development. These are updated yearly and the information booklet will be provided to families before the end of the current academic year.

### Morning and After-School Club

Designed to support students' holistic development, accommodate families' needs, and create a seamless extension of the school day, the Morning Club operates from 7:30 AM until the start of classes, offering a safe and supervised environment for students before school hours. This service includes quiet, structured activities like reading, drawing, or puzzles to help students ease into the school day, socialize with peers, and ensure a smooth transition into the school routine.

The After-School Club runs from the end of the regular school day until 5:30 PM, providing a safe and enriching environment for students. It includes a variety of activities such as recreational games and nutritious snacks to keep students energized and focused.

Both services offer peace of mind for working parents, ensuring their children are well-cared for and engaged in productive activities.

## Summer Programs

At The British School of Costa Daurada, our summer experiences offer exciting opportunities for children and young people of all ages to learn, explore, and grow. From our themed Summer Camp—featuring activities such as baking, sports, adventure, robotics, water play, and sailing—to international trips abroad that combine cultural exploration with education, technology, or sports, each programme is designed to be fun, enriching, and age-appropriate. Taking place throughout the month of July, these experiences are open to both BSCD students and children from outside the school. Full details are published each March.





## SCHOOL COMMUNITY & FAMILY HUB

- **School for Parents**

Parents are seen as crucial allies in educating their children, and the school maintains an open-door policy and instant communication to foster a supportive and collaborative environment.

- **Networking**

This platform is designed to facilitate meaningful connections and relationships among professionals in our school community and it is a valuable tool to foster collaboration and connections as well as building a supportive community.

- **Charity Committee**

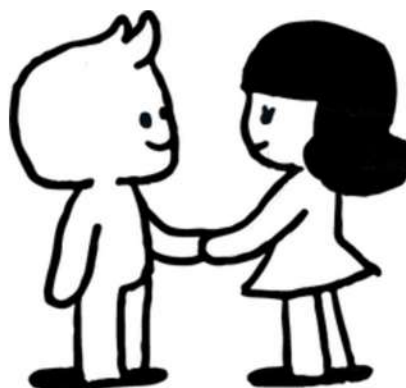
Our School Core Values of Responsibility and Kindness inspired us to found the BSCD Charity Committee in 2022. The existence of our Charity Committee, made up of volunteers from the staff, pupils from Year 6 and Secondary and families, serves as a powerful demonstration to pupils that we are actively modelling our sense of responsibility and kindness towards the world, by organising and participating in charitable initiatives that embody creating a meaningful and impactful learning experience for our students.

- **School Events**

At BSCD, we believe in fostering a supportive and engaging environment for parents to participate in school events. To ensure the success of these occasions and maintain fairness and respect for all students. In addition to the base programme provided to the families at the beginning of each term, BSCD offers further enrichment activities, with new opportunities being added every year. These include Lego League, Cross Country Weekend Events, Music Day, Science Week, International Book Day, Writing Contest, Sports tournaments, and Language Day.

- **Uniforms**

School uniform is important as it helps to give us a sense of school pride and shared community. It also helps pupils to resist peer pressure to follow fashion trends, it minimises accessory-related distractions in the classroom and most importantly, it helps to diminish economic and social barriers between pupils which helps to decrease bullying





# ADMISSIONS PROCEDURE

If you would like to schedule a visit with the school, you can do so by visiting our website and completing the form that you can find on the admissions site.

## Easy 7 step process!

**1**

### CONTACT US

Contact our BSCD Admissions team so we can help you explore how we can support your family's unique needs. This initial contact is a great opportunity to check availability and gain insights into the exceptional programs and resources our outstanding school provides.

**2**

### EXPLORE BSCD

Immerse yourself in the warm and inviting atmosphere of The British School of Costa Daurada by attending one of our Open Days or scheduling a private visit. We look forward to welcoming you, giving you a tour, and offering a glimpse into school life.

**3**

### SUBMIT AN APPLICATION FOR ADMISSION

When you're ready to move forward, follow the instructions provided by our Admissions team, which include completing the online application form and submitting your child's latest school reports, passports/ID, and references (if applicable). This will allow us to begin the admissions process and ensure we can meet your child's needs.

**4**

### ASSESSMENT AND INTERVIEW

After submitting the application and depending on your child's age, we will invite you and your child to either an informal assessment or an interview to evaluate their English level based on the year group you are applying for. Additionally, they will have an interview with the Headteacher.

**5**

### PLACE OFFER

Upon successfully completing the assessment and/or interview, and depending on availability, we will extend a formal, time-limited offer for your child to join our school. If no places are available for your preferred start date, your child will be added to our waiting list, and we will inform you as soon as a place becomes available.

**6**

### ADMISSIONS DOCUMENTS

If you accept the offer, you will be required to complete the School Admissions Booklet, submit all necessary supporting documents, and pay the matriculation fee to secure your child's place.

**7**

### BEGIN YOUR JOURNEY AT BSCD

From the moment you and your child arrive at BSCD, we will make sure you have a seamless transition and a welcoming experience, helping you quickly feel like part of the BSCD community.





## Contact us for more info or to schedule a visit

---

📍 Mas de la Creu, 4  
43764 El Catllar  
(Tarragona)

☎ +34 977 253 364

✉ admissions@bscd.cat

🌐 bscd.cat

📺 The British School of  
Costa Daurada\_ Canal

School Code: 43012745